



Quality ~ Craftsmanship ~ Pride

PAINT PROCESS

One of the most important qualities of a steel trailer is the preparation it receives before painting and the quality of primer and paint.

All materials used in the production of Felling Trailers, are of the highest quality commercially available. After assembly, the trailer is completely steel grit blasted, to a 1-2 mil profile to remove all rust and contaminants. Next a polyurethane high build primer is applied, resulting in a dry film thickness of 2.5-3.0 mils. The trailers are then painted with a polyurethane finish top coat, resulting in a complete dry film thickness (DFT) of 4-6 mils and fully cured in our temperature controlled, dust free cure facility.

“PPG products” are used exclusively, including the top of the line polyurethane primer and high solids low V.O.C. compliant polyurethane top coat on all Felling Trailers.

Preparation and painting processes are monitored daily by in house technicians, “PPG representatives” and Felling Trailers, Inc. in-house quality control teams to insure consistency in quality. Felling Trailers come with a 3-year warranty on the paint.



www.felling.com • trailers@felling.com
1-800-245-2809
1525 Main St. S. • Sauk Centre, MN 56378



Est. 1974

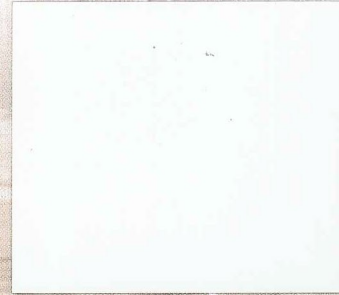
Paint Selection Chart

FELLING TRAILERS

COLOR OPTIONS ~ PRICE LEVEL B



Standard - Felling Black
CCA945378



Vivid White
CCA945380

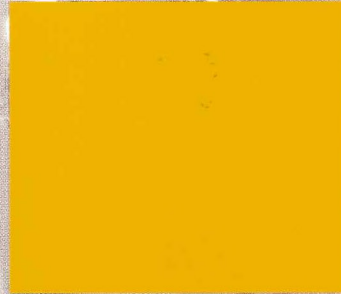


Construction Yellow
CCA945588

COLOR OPTIONS ~ PRICE LEVEL A



Construction Grey
CCA945592



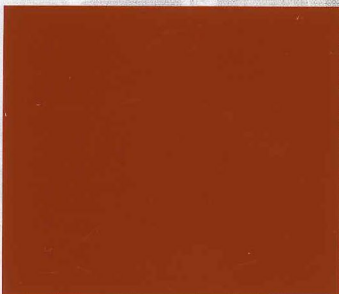
Bold Yellow
CCA945381



Omaha Orange
CCA945591



Viper Red
CCA945383



Oklahoma Orange
CCA945379



Cosmic Blue
CCA945382



****HOT DIP GALVANIZING AVAILABLE****

*Clear Coat, Metallic, Color matches and other color colors available upon request. Call 1-800-245-2809 for pricing.

**Colors cannot be considered totally accurate color matches, and are not to be used as approved color standards.

COLOR SELECTION CHART

QUALITY ~ CRAFTSMANSHIP ~ PRIDE