

# Pole & Reel Trailers

for the Utility Industry

By **FELLING TRAILERS INC.**

Load Capacities from 7,000 to 40,000 pounds!

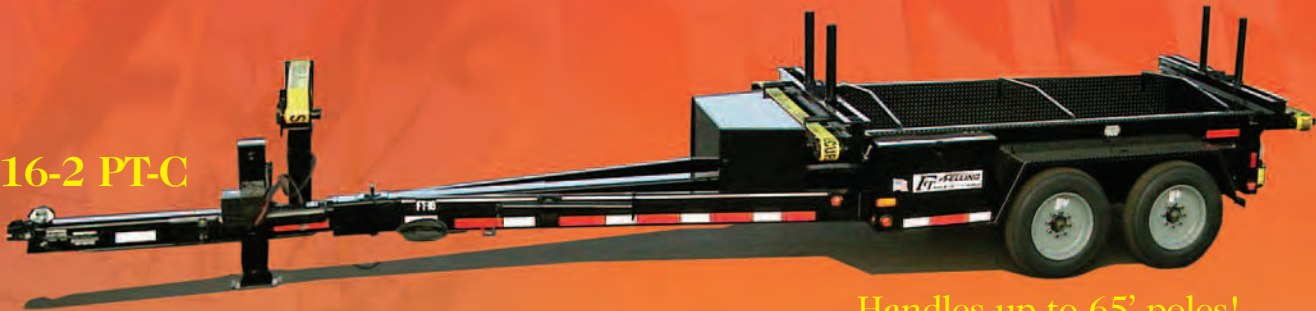
The One Source Resource For All Your Trailer Needs



**FT-8 R (Galvanized)**  
96" -120" Reel Capacity

- Steel Shot blasted!!
- Urethane primer!
- Painted with industrial grade urethane paint!
- Structural steel tubing & channel construction!
- DOT approved lighting & break-away system with rechargeable gel cell battery!

**FT-16-2 PT-C**



Handles up to 65' poles!



**FT-15-1 PT**  
Handles up to 65' poles!

Manufacturing Industrial Trailers Since 1974.



The **FELLING** Style:

PR-100 QUALITY ~ CRAFTSMANSHIP ~ PRIDE

# “PT” SERIES

**HOT DIP GALVANIZING AVAILABLE**



FT-8-1 PT Shown on the left with optional pole cradle, adjustable pole stanchions, expanded metal in A-frame w/covers and wheel chocks w/storage. Hauls poles from 45' to 50'.

FT-12-1 PT Shown on the right with dual Budd wheels, optional pole cradle and yellow paint. Hauls up to 65' poles.



FT-14-2 PT Shown on the left shown with optional pole cradle, adjustable pole stanchions, and Omaha Orange paint. Hauls poles from 45' to 50'.



FT-20-2 PT Shown above with tandem dual Budd wheels and an optional pole cradle. Hauls up to 80' poles.

Model	GVWR	OVERALL LENGTH	WHEELS	TIRES	BRAKES	AXLE RATING
FT-7-1 PT	7,000#	22' - 33'	8 hole white mod	(2) ST235/80R16 LRE	Electric	(1) 7,000#
FT-8-1 PT	8,000#	22' - 33'	8 hole plate	(2) 12.00 x 16.5 LRF	Electric	(1) 8,000#
FT-12-1 PT	16,800#	22' - 33'	8 hole dual Budd	(4) ST235/80R16 LRE	Electric/Air	(1) 12,000#
FT-14-2 PT	19,000#	22' - 33'	8 hole white mod	(4) ST235/80R16 LRE	Electric/Air	(2) 7,000#
FT-15-1 PT	20,200#	22' - 33'	8 bolt Hub Pilot	(4) 215/75R17.5 LRH	Electric/Air	(1) 15,000#
FT-20-1 PT	25,500#	22' - 33'	8 bolt Hub Pilot	(4) 215/75R17.5 LRH	Electric/Air	(1) 25,000#
FT-20-2 PT	25,900#	22' - 33'	8 hole dual Budd	(8) ST235/80R16 LRE	Electric/Air	(2) 10,000#
FT-24-2 PT	30,200#	22' - 33'	8 hole dual Budd	(8) ST235/80R16 LRE	Electric/Air	(2) 12,000#

**FELLING TRAILERS INC.** reserves the right to make changes at any time without obligation to notify or update.

# “PT-C” SERIES

**HOT DIP GALVANIZING AVAILABLE**

**The Functionality of the Felling Pole/Cargo Box  
will Double Your Efficiency**

## FT-14-2 PT-C



**FT-14-2 PT-C**  
Shown above and to the left with optional hinged tailgate, front pole cradle and Viper Red paint.

## FT-16-2 PT-C



**FT-16-2 PT-C**  
Shown above and on the left with optional toolbox/compartments, D-rings & J-hooks, wheel chocks w/storage, front/rear cable spools, vice and White paint.

Model	GVWR	Standard Box Size	OVERALL LENGTH	WHEELS	TIRES	BRAKES	AXLE RATING
FT-12-2 PT-C	17,200#	62" x 8'	22' - 33'	8 hole white mod	(4) ST235/80R16 LRE	Electric	(2) 6,000#
FT-14-2 PT-C	16,000#	62" x 10'	22' - 33'	8 hole white mod	(4) ST235/80R16 LRE	Electric	(2) 7,000#
FT-16-2 PT-C	18,000#	62" x 10'	22' - 33'	8 hole plate	(4) 215/75R17.5 LRH	Electric	(2) 8,000#

**FELLING TRAILERS INC.** reserves the right to make changes at any time without obligation to notify or update.

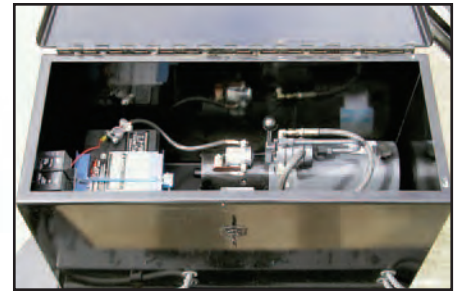
# CABLE REEL TRAILERS

**HOT DIP GALVANIZING AVAILABLE**



## **FT-8 R (Galvanized)**

the trailer shown above has been Hot Dip Galvanized, optional feature.



Battery and pump mounted in lockable enclosure.

**FELLING** Trailers offers four (4) standard Cable Reel Trailer models;

- FT-3 R - 3,000 lb. capacity (w/brakes)
- FT-8 R - 7,200 lb. capacity
- FT-10 R - 9,600 lb. capacity
- FT-14 R - 14,000 lb. capacity



**FT-10 R**



**FT-14 R** shown with optional Hydraulic Power Rewind (gas, self-contained unit), 12" Bronze Tension Brake (manual) and White Paint.



Hydraulic Power Rewind (Gas Engine, Self Contained Unit).

**FELLING TRAILERS INC.** reserves the right to make changes at any time without obligation to notify or update.

# MULTI-REEL TRAILERS

HOT DIP GALVANIZING AVAILABLE

## A Trailer Built To Fit *YOUR* Needs

**FELLING** Trailers believes that “*It’s All In The Details*” when it comes to building a trailer. We build trailers to accommodate your equipment and to suit your needs, right down to the last detail. From a standard single reel trailer to a drop deck trailer with removable reel stands, we strive to meet your needs.

FT-8 R



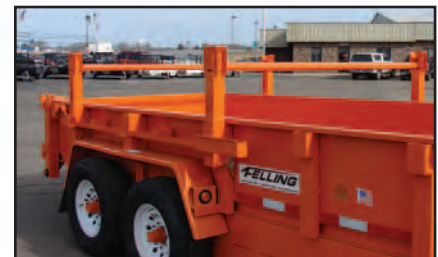
FT-10 L (*Galvanized*)

Shown with opt. 2-Reel capacity (removable), catwalk, rear stabilizer legs, galvanizing, spare wheel and tired mounted.



FT-14 DT HD (*Dump Trailer*)

Shown with optional 2-Reel capacity (removable), aluminum toolbox w/solar panel, Omaha Orange paint.



Side storage for Reel Stands.

FT-30-3 R



# MULTI-USE TRAILERS

HOT DIP GALVANIZING AVAILABLE

## POLE - CARGO - REEL - ALL IN ONE

FT-16-2 PT-R/C

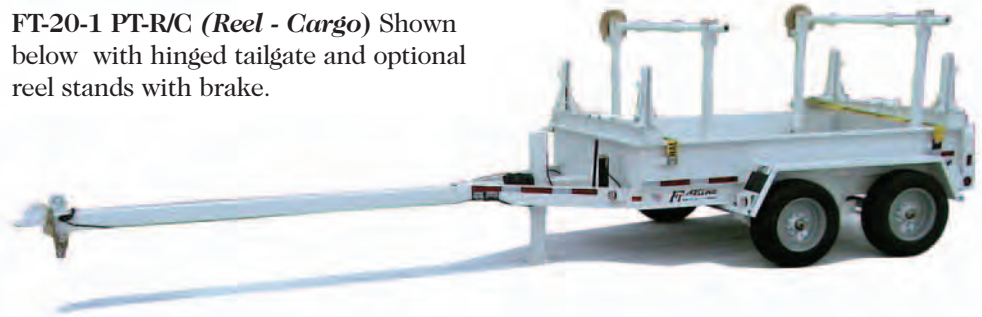


FT-16-2 PT-R/C (*Reel - Cargo*) Shown above with hinged tailgate, optional front removable pole cradle, and lockable toolbox in tongue.



FT-20-1 PT-R/C (*Reel - Cargo*) Shown below with hinged tailgate and optional reel stands with brake.

FT-20-2 PT-R/C



**FELLING** Trailers prides itself on the Quality Craftsmanship that is put into each trailer. From the drawing board to the paint room we strive to build a trailer that will serve every purpose that you need it to and more. \*Also available in 6,000 lb. capacity.

### FT-3 Plastic Pipe Coil Trailer

- 3,500 lb. (1,587kg) GVWR
- (1) 3,500 lb. axle/electric brakes
- (2) 225/75R15 LRD tires
- Turntable with manual brake
- Electric/Hydraulic or Hand Pump Tilted turn table
- Standard with black paint
- Hot Dip Galvanizing Optional
- Customized Options Available



FT-3 Pipe Coil (*Galvanized*)



# OPTIONAL FEATURES

## Pole Trailers (PT), Pole/Cargo (PT-C) & Reel (R) Trailers



Sliding 4" Belt Ratchet



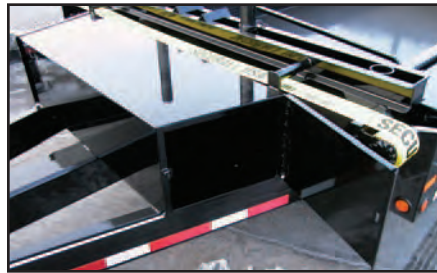
Front Pole Cradle with Ratchet Winch, Bolt on with Stationary Ends and Tie Down Strap



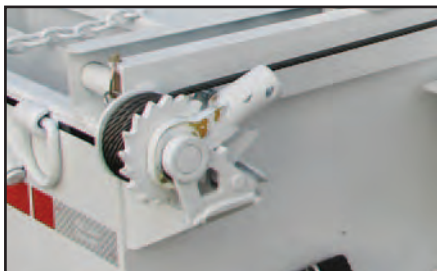
Aluminum Light Bar with Storage, Ratchet and Strap



Multiple Tow Straps with Belt Winches



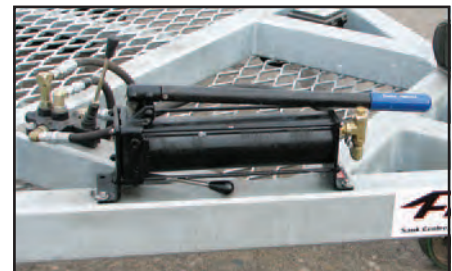
Lockable Toolbox  
Various Placement Available - Tongue, Side of Trailer etc.



Cable Ratchet Pulley System



Cable Reel Attachment - Up to 72" Reels, 2-1/2" Spindle Bar w/2 Lock Collars Mount to Bed Rail, Opt. Manual Brake



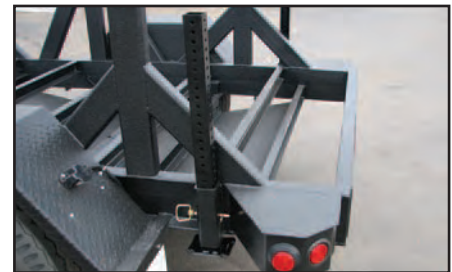
Hand Pump in lieu of Electric/Hydraulic Pump on Pipe Coil Trailer



Catwalk in Front and Rear of Fender Providing Side Steps



Solar Panel - charges the hydraulic/electric rewind



Rear Stabilizer Leg(s)

**FELLING TRAILERS INC.** reserves the right to make changes at any time without obligation to notify or update.

To learn more about us, have us mail you a specific full color brochure, or locate your nearest **FELLING** dealer, go to [www.felling.com](http://www.felling.com) or give us a call at 1-800-245-2809.  
*"Designed and engineered for the long haul."*



Felling Trailers, Inc. started as a small shop in 1974 and has grown to a factory and office complex that today covers over 125,000 square feet. The current capabilities of Felling Trailers allows them to produce thousands of highly engineered quality products each year that are distributed across North America and Internationally.

Your **FELLING** TRAILER Dealer:

**FELLING**  
**TRAILERS**

1525 Main St. S • Sauk Centre, MN 56378

(320) 352-5239 • (320) 352-5230 FAX

Check us out on the web at: <http://www.felling.com>

Email us at: [trailers@felling.com](mailto:trailers@felling.com)

Call **1-800-245-2809** for your nearest dealer